

C/L
C-23

Hideaway

18.1

CONDITION OF DOCUMENT
UNSUITABLE FOR MICROFILMING

SCALE 1" = 100'

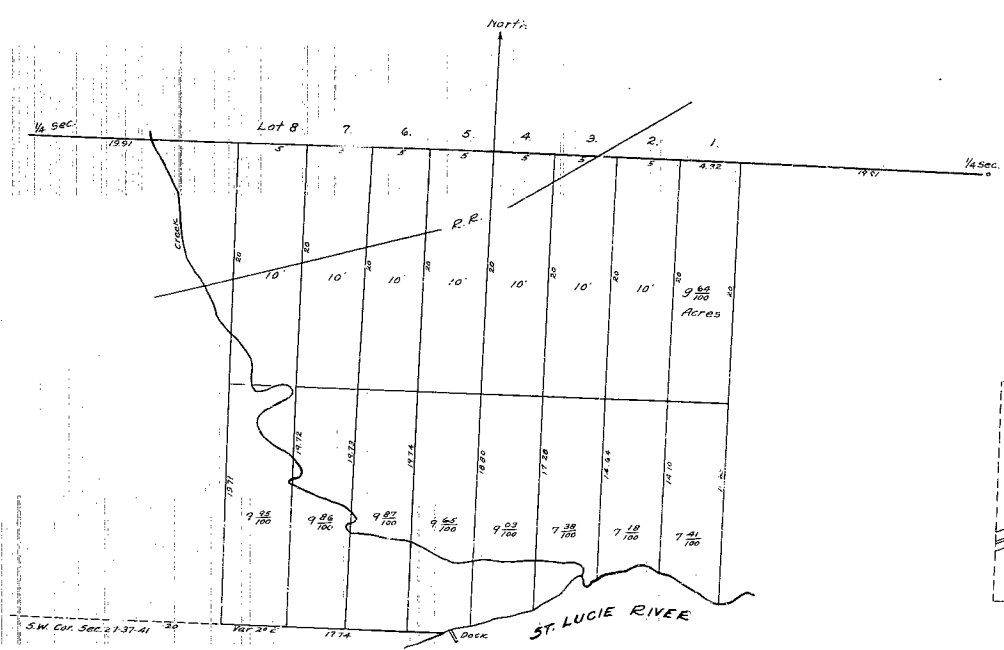
ASSESSMENT MAP
MARTIN COUNTY,
FLORIDA



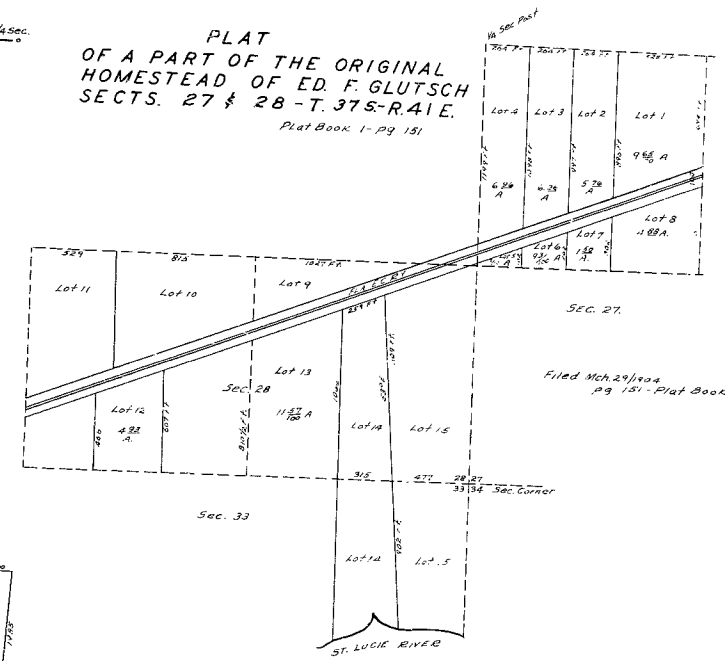
SECTION 1
TOWNSHIP 38 S
RANGE 40 E
PAGE

THIS IS A TRUE COPY OF THE ORIGINAL
 PLAT OF RECORD OF GLUTSCH SUBDIVISION,
 PLAT BOOK 1, PAGE 213 ST. LUCIE COUNTY,
 NOW MARTIN COUNTY.

213

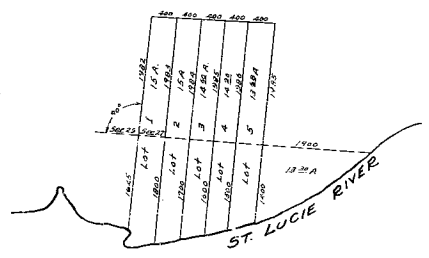


PLAT
 OF A PART OF THE ORIGINAL
 HOMESTEAD OF ED. F. GLUTSCH
 SECTS. 27 & 28 - T. 37S-R. 41E.
 Plat Book 1 - pg 151



MAP OF LANDS
 OWNED BY J.T. CLEVELAND
 EMBRACING LOTS 2-3 SEC. 27
 T. 37-R. 41E.

As subdivided Mch. 21, 1894
 Filed Apl. 20/1894. Transcribed from D.B. X - pg. 752.
 R.A. Stewart - Clerk. by J.O. Pries
 by W.I. Allen, Surveyor
 Scale 1/4 in. = 100 ft.



PLAT OF THE SUBDIVISION
 S.W. 1/4 OF S.W. 1/4 SEC. 27 & W.
 PART OF LOT 2 SEC. 34 - T. 37S -
 R. 41E.

Filed July 14/1893
 Transcribed from D.B. (V) pg. 496.

22:1

CONDITION OF DOCUMENT
 UNSUITABLE FOR MICROFILMING

Hobe Sound Acres

BLOCK 2



HOBESOUND ACRES

18.1

SCALE 1" = 100'

ASSESSMENT MAP
MARTIN COUNTY,
FLORIDA

SECTION _____

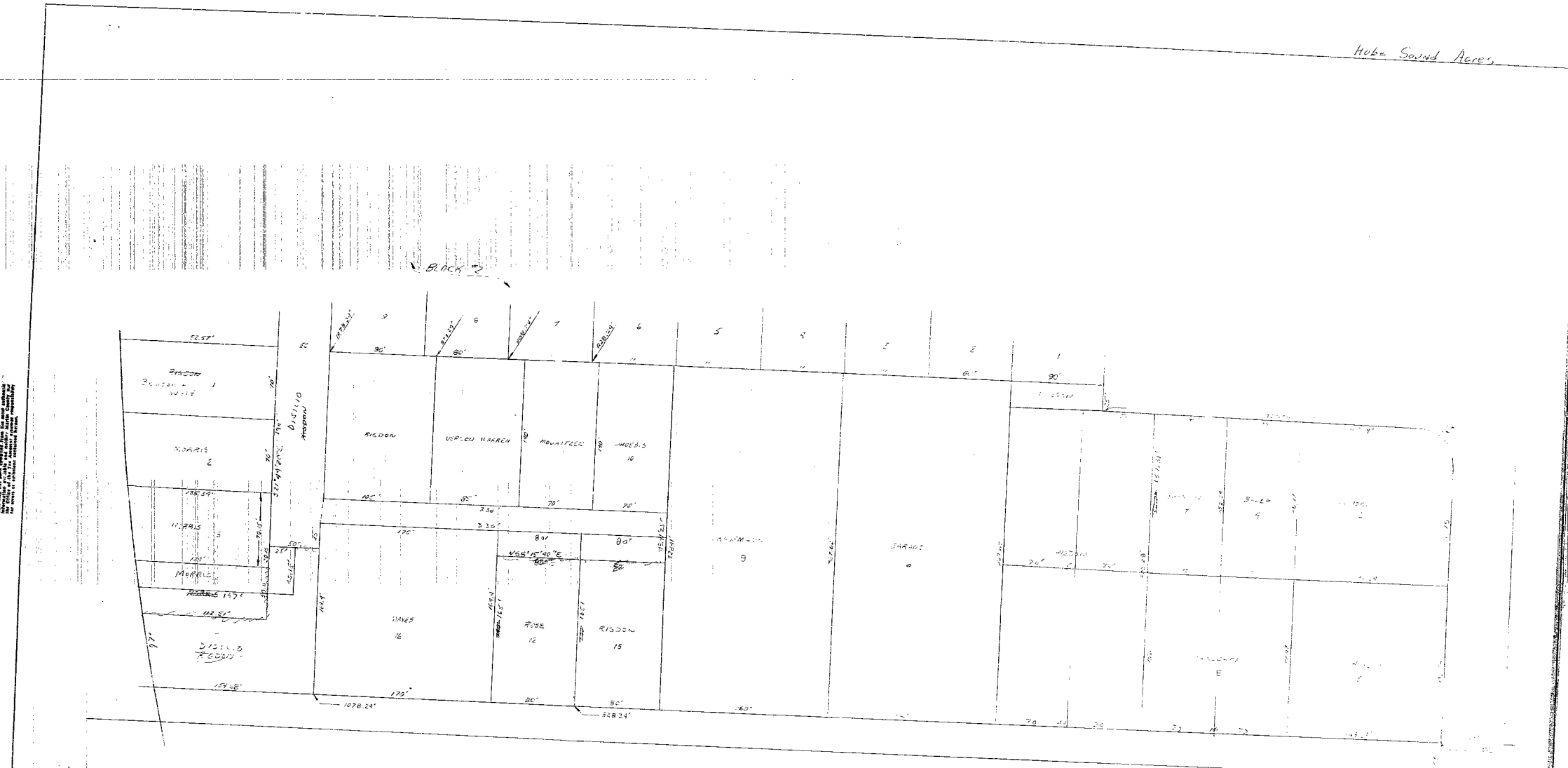
TOWNSHIP _____ S

RANGE _____ E

DRAWN BY _____ DATE _____

CONDITION OF DOCUMENT
UNUSABLE FOR MICROFILMING

Hobe Sound Acres



HOBE SOUND ACRES

22:1

CONDITION OF DOCUMENT
UNSATISFACTORY FOR MICROFILMING

18.1

SCALE 1" = 20'

ASSESSMENT MAP
MARTIN COUNTY,
FLORIDA

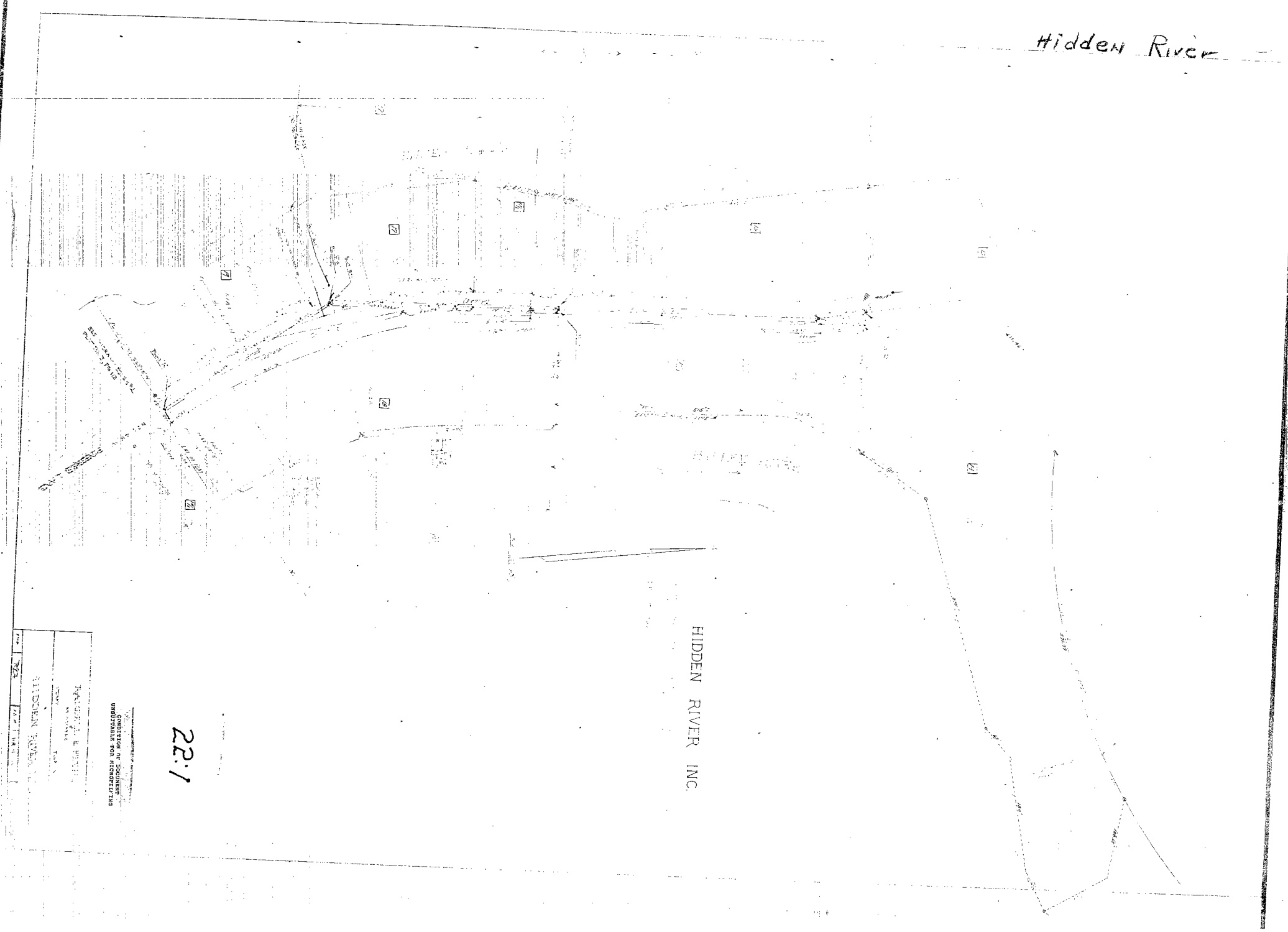
SECTION _____

TOWNSHIP _____ 5

RANGE _____ E

DRAWN BY _____ DATE _____

Hidden River



HIDDEN RIVER INC.

22:1

CONSTRUCTION OF DOCUMENT
UNRECORDED FOR RECORDATION
HIDDEN RIVER INC.
22:1